

Unison Melodies for Band

2020 - 2021

1 Concert B \flat Scale - Level I

Musical notation for the Concert B \flat Scale - Level I. The piece is in 4/4 time and consists of a single melodic line on a treble clef staff. The scale starts on G \flat and ends on G \flat . The notes are: G \flat , A \flat , B \flat , C, D, E, F, G \flat . There are eight groups of three arrows (two down, one up) positioned below the notes, indicating a specific fingering or breath control exercise.

2 Concert B \flat Scale - Level I (subdivided)

Musical notation for the Concert B \flat Scale - Level I (subdivided). The piece is in 4/4 time and consists of a single melodic line on a treble clef staff. The scale starts on G \flat and ends on G \flat . The notes are: G \flat , A \flat , B \flat , C, D, E, F, G \flat . There are 14 groups of two arrows (one down, one up) positioned below the notes, indicating a specific fingering or breath control exercise.

3 Etude #1

Musical notation for Etude #1. The piece is in 4/4 time and consists of a single melodic line on a treble clef staff. The scale starts on G \flat and ends on G \flat . The notes are: G \flat , A \flat , B \flat , C, D, E, F, G \flat . The piece is a simple melodic exercise.

4 Etude #2

Musical notation for Etude #2. The piece is in 3/4 time and consists of a single melodic line on a treble clef staff. The scale starts on G \flat and ends on G \flat . The notes are: G \flat , A \flat , B \flat , C, D, E, F, G \flat . There are four groups of four arrows (two down, two up) positioned below the notes, indicating a specific fingering or breath control exercise.

5 Concert B \flat Thirds - Level I

Musical notation for the Concert B \flat Thirds - Level I. The piece is in 4/4 time and consists of a single melodic line on a treble clef staff. The scale starts on G \flat and ends on G \flat . The notes are: G \flat , A \flat , B \flat , C, D, E, F, G \flat . There are four groups of four arrows (two down, two up) positioned below the notes, indicating a specific fingering or breath control exercise.

6 Twinkle, Twinkle Little Star

Musical notation for Twinkle, Twinkle Little Star. The piece is in 4/4 time and consists of a single melodic line on a treble clef staff. The scale starts on G \flat and ends on G \flat . The notes are: G \flat , A \flat , B \flat , C, D, E, F, G \flat . The piece is a simple melodic exercise.

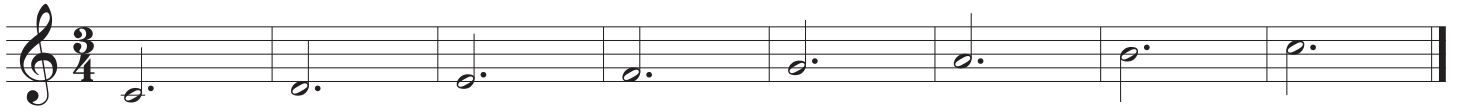
Musical notation for Twinkle, Twinkle Little Star (continued). The piece is in 4/4 time and consists of a single melodic line on a treble clef staff. The scale starts on G \flat and ends on G \flat . The notes are: G \flat , A \flat , B \flat , C, D, E, F, G \flat . The piece is a simple melodic exercise.

7 Jingle Bell

Musical notation for Jingle Bell. The piece is in 4/4 time and consists of a single melodic line on a treble clef staff. The scale starts on G \flat and ends on G \flat . The notes are: G \flat , A \flat , B \flat , C, D, E, F, G \flat . The piece is a simple melodic exercise.

Musical notation for Jingle Bell (continued). The piece is in 4/4 time and consists of a single melodic line on a treble clef staff. The scale starts on G \flat and ends on G \flat . The notes are: G \flat , A \flat , B \flat , C, D, E, F, G \flat . The piece is a simple melodic exercise.

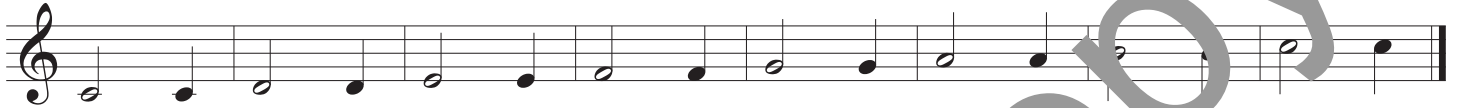
8 Concert B \flat Scale - Level 2



9 Concert B \flat Scale - Level 2 (subdivided)



10 Concert B \flat Scale - Level 2 (long short)



11 Concert B \flat Scale - Level 2 (short long)



12 Concert B \flat Arpeggio - Level 1



13 London Bridge



14 Hot Cross Buns



15 Lightly now



16 Concert B \flat Scale - Level 3

Musical notation for Concert B \flat Scale - Level 3. The staff shows a single melodic line with notes and rests. Below the staff are 15 pairs of arrows, one pointing up and one pointing down, indicating fingerings for each note.

17 Concert B \flat Scale - Level 3 (subdivided)

Musical notation for Concert B \flat Scale - Level 3 (subdivided). The staff shows a single melodic line with notes and rests. Below the staff are 15 pairs of arrows, one pointing up and one pointing down, indicating fingerings for each note.

18 Twinkle, Twinkle Little Star - Level 2

Musical notation for Twinkle, Twinkle Little Star - Level 2. The staff shows a single melodic line with notes and rests. Below the staff are 15 pairs of arrows, one pointing up and one pointing down, indicating fingerings for each note.

Musical notation for Twinkle, Twinkle Little Star - Level 2 (continued). The staff shows a single melodic line with notes and rests. Below the staff are 15 pairs of arrows, one pointing up and one pointing down, indicating fingerings for each note.

19 Etude #3

Musical notation for Etude #3 (first line). The staff shows a single melodic line with notes and rests. Below the staff are 15 pairs of arrows, one pointing up and one pointing down, indicating fingerings for each note.

Musical notation for Etude #3 (second line). The staff shows a single melodic line with notes and rests. Below the staff are 15 pairs of arrows, one pointing up and one pointing down, indicating fingerings for each note.

20 B \flat Thirds - Level 2

Musical notation for B \flat Thirds - Level 2. The staff shows a single melodic line with notes and rests. Below the staff are 15 pairs of arrows, one pointing up and one pointing down, indicating fingerings for each note.

21 Lightly Row - Level 2

Musical notation for Lightly Row - Level 2 (first line). The staff shows a single melodic line with notes and rests. Below the staff are 15 pairs of arrows, one pointing up and one pointing down, indicating fingerings for each note.

Musical notation for Lightly Row - Level 2 (second line). The staff shows a single melodic line with notes and rests. Below the staff are 15 pairs of arrows, one pointing up and one pointing down, indicating fingerings for each note.

22 Concert E \flat Scale - Level 1



23 Concert E \flat Scale - Level 2



24 Etude #4



25 Yankee Doodle



26 Aura Lea



27 Mary Had a Little Lamb

Musical notation for 'Mary Had a Little Lamb' in G major, 4/4 time. The melody consists of two staves of music. The first staff contains the first two measures, and the second staff contains the next two measures, ending with a double bar line.

28 Man on the Flying Trapeeze

Musical notation for 'Man on the Flying Trapeeze' in B \flat major, 3/4 time. The melody consists of two staves of music. The first staff contains the first two measures, and the second staff contains the next two measures, ending with a double bar line.

29 Ode to Joy

Musical notation for 'Ode to Joy' in C major, 4/4 time. The melody consists of two staves of music. The first staff contains the first two measures, and the second staff contains the next two measures, ending with a double bar line.

30 Takeda Lullaby

Musical notation for 'Takeda Lullaby' in C major, 4/4 time. The melody consists of two staves of music. The first staff contains the first two measures, and the second staff contains the next two measures, ending with a double bar line.

31 We Three Kings

Musical notation for 'We Three Kings' in B \flat major, 3/4 time. The melody consists of two staves of music. The first staff contains the first two measures, and the second staff contains the next two measures, ending with a double bar line.

32 Concert B♭ Scale - Level 4a

Musical notation for Concert B♭ Scale - Level 4a. The piece is in 4/4 time and B-flat major. The melody consists of a single line of music with quarter notes and half notes. Below the staff, there are 18 vertical arrows pointing downwards, indicating fingerings for each note.

33 Concert B♭ Scale - Level 4b

Musical notation for Concert B♭ Scale - Level 4b. The piece is in 4/4 time and B-flat major. The melody consists of a single line of music with quarter notes and eighth notes. Below the staff, there are 18 vertical arrows pointing up and down, indicating fingerings for each note.

34 When the Saints Go Marching In

Musical notation for "When the Saints Go Marching In". The piece is in 3/4 time and B-flat major. The melody consists of a single line of music with quarter notes and half notes, featuring a characteristic dotted quarter note pattern.

35 Ma'oz Tzur ("Rock of Ages")

Musical notation for "Ma'oz Tzur". The piece is in 4/4 time and B-flat major. The melody consists of a single line of music with quarter notes and half notes, featuring a long melisma (breath mark) over the first four notes.

36 Concert E♭ Arpeggios - Level I

Musical notation for Concert E♭ Arpeggios - Level I. The piece is in 4/4 time and E-flat major. The melody consists of a single line of music with quarter notes, forming an ascending and then descending arpeggio pattern.

37 Concert E♭ Basic Up 5

Musical notation for Concert E♭ Basic Up 5. The piece is in 4/4 time and E-flat major. The melody consists of a single line of music with quarter notes, forming an ascending scale.

38 Concert E♭ Basic Down 5

Musical notation for Concert E♭ Basic Down 5. The piece is in 4/4 time and E-flat major. The melody consists of a single line of music with quarter notes, forming a descending scale.

39 Go Tell Aunt Rhody

Two staves of musical notation for the piece 'Go Tell Aunt Rhody'. The first staff contains the first eight measures, and the second staff contains the final four measures. The music is written in a single treble clef with a key signature of one flat (B \flat) and a common time signature (C).

40 When the Saints Go Marching In - Level 2

Two staves of musical notation for the piece 'When the Saints Go Marching In - Level 2'. The first staff contains the first eight measures, and the second staff contains the final four measures. The music is written in a single treble clef with a key signature of one flat (B \flat) and a common time signature (C).

41 Concert E \flat Thirds - Level 1

One staff of musical notation for the piece 'Concert E \flat Thirds - Level 1'. The staff contains ten measures of music. The music is written in a single treble clef with a key signature of one flat (B \flat) and a common time signature (C).

42 Concert E \flat Thirds - Level 2

One staff of musical notation for the piece 'Concert E \flat Thirds - Level 2'. The staff contains ten measures of music. The music is written in a single treble clef with a key signature of one flat (B \flat) and a common time signature (C).

43 Yankee Doodle - Level 2

One staff of musical notation for the piece 'Yankee Doodle - Level 2'. The staff contains ten measures of music. The music is written in a single treble clef with a key signature of one flat (B \flat) and a common time signature (C).

44 Erie Canal

Two staves of musical notation for the piece 'Erie Canal'. The first staff contains the first eight measures, and the second staff contains the final four measures. The music is written in a single treble clef with a key signature of one flat (B \flat) and a common time signature (C).

45 Concert B \flat Scale Level 5a

Musical staff for exercise 45, Concert B \flat Scale Level 5a. The staff contains a sequence of notes with fingerings indicated by arrows below the notes.

46 Concert B \flat Scale Level 5b

Musical staff for exercise 46, Concert B \flat Scale Level 5b. The staff contains a sequence of notes with fingerings indicated by arrows below the notes.

47 Concert B \flat Scale Level 5c

Musical staff for exercise 47, Concert B \flat Scale Level 5c. The staff contains a sequence of notes with fingerings indicated by arrows below the notes.

48 New World Symphony

Musical staff for exercise 48, New World Symphony. The staff contains a sequence of notes with fingerings indicated by arrows below the notes.

Musical staff for exercise 48, New World Symphony. The staff contains a sequence of notes with fingerings indicated by arrows below the notes.

49 New World Symphony - Level 2

Musical staff for exercise 49, New World Symphony - Level 2. The staff contains a sequence of notes with fingerings indicated by arrows below the notes.

Musical staff for exercise 49, New World Symphony - Level 2. The staff contains a sequence of notes with fingerings indicated by arrows below the notes.

50 Over and Under - Level 1

Musical staff for exercise 50, Over and Under - Level 1. The staff contains a sequence of notes with fingerings indicated by arrows below the notes.

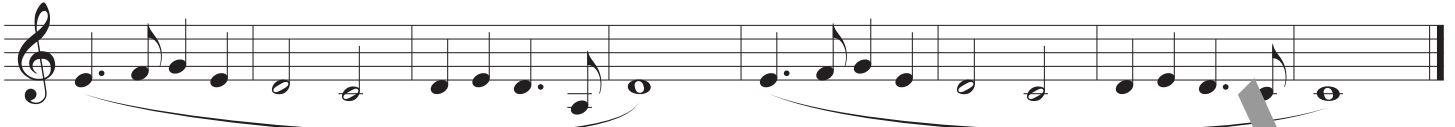
51 Over and Under - Level 2

Musical staff for exercise 51, Over and Under - Level 2. The staff contains a sequence of notes with fingerings indicated by arrows below the notes.

52 Over and Under - Level 3



53 In the Bleak Midwinter



54 In the Bleak Midwinter - Level 2



55 Eine kleine Nachtmusik (intro)



56 My Country Tis of Thee



57 Blue Bells of Scotland



58 "Can Can" from Orpheus in the Underworld



59 Jingle Bells - Level 2

Two staves of musical notation for "Jingle Bells - Level 2". The first staff contains the first two measures, and the second staff contains the next two measures. The melody is in G major and 2/4 time, featuring eighth and sixteenth notes.

60 "Adventure" 1

One staff of musical notation for "'Adventure' 1". The melody is in B-flat major and 4/4 time, featuring quarter and eighth notes.

61 "Adventure" 2

One staff of musical notation for "'Adventure' 2". The melody is in B-flat major and 4/4 time, featuring quarter and eighth notes. Fingerings are indicated by arrows above the notes: down arrows for notes on lines 1, 2, 3, 4, 5 and up arrows for notes on spaces 1, 2, 3, 4, 5.

62 Dreidel, Dreidel

One staff of musical notation for "Dreidel, Dreidel". The melody is in G major and 4/4 time, featuring quarter and eighth notes.

63 Scarborough Fair

Two staves of musical notation for "Scarborough Fair". The first staff contains the first two measures in 3/4 time, and the second staff contains the next two measures. The melody is in D major and 3/4 time, featuring quarter and eighth notes.

64 Rainbow Sisters - Level 1

Two staves of musical notation for "Rainbow Sisters - Level 1". The first staff contains the first two measures in 4/4 time, and the second staff contains the next two measures. The melody is in G major and 4/4 time, featuring quarter and eighth notes.

72 Etude #5

Musical notation for Etude #5, measures 1-4. The piece is in B-flat major (one flat) and 4/4 time. The melody consists of eighth and quarter notes with various slurs and accents.

73 Swan Lake - Level 1

Musical notation for Swan Lake - Level 1, measures 1-4. The piece is in B-flat major (one flat) and 4/4 time. The melody features eighth notes and quarter notes with slurs.

74 Swan Lake - Level 2

Musical notation for Swan Lake - Level 2, measures 1-4. The piece is in D major (two sharps) and 4/4 time. The melody includes eighth notes, quarter notes, and dotted notes with slurs.

75 Yankee Doodle - Level 3

Musical notation for Yankee Doodle - Level 3, measures 1-4. The piece is in D major (two sharps) and 4/4 time. The melody is a rhythmic eighth-note pattern with slurs.

76 Takeda Lullaby - Level 2

Musical notation for Takeda Lullaby - Level 2, measures 1-4. The piece is in D major (two sharps) and 4/4 time. The melody is a lullaby-style piece with long slurs and a mix of note values.

77 Ode to Joy - Level 2

Musical notation for 'Ode to Joy' in G major, 4/4 time. The melody consists of two staves of music. The first staff contains the first two measures, and the second staff contains the remaining measures, ending with a double bar line.

78 A Ram Sam Sam

Musical notation for 'A Ram Sam Sam' in B-flat major, 4/4 time. The melody consists of two staves of music. The first staff begins with a whole rest followed by a quarter rest, then continues with the melody. The second staff concludes the piece with a double bar line.

79 Ma'oz Tzur ("Rock of Ages") - Level 2

Musical notation for 'Ma'oz Tzur' in G major, 4/4 time. The melody is written on a single staff and features several long, sweeping slurs over the notes.

80 Concert F Scale - Level 2

Musical notation for 'Concert F Scale' in G major, 4/4 time. The melody is written on a single staff and consists of a continuous scale with slurs over the notes.

81 Scarborough Fair - Level 2

Musical notation for 'Scarborough Fair' in G major, 3/4 time. The melody is written on two staves. The first staff includes a 3/4 time signature and ends with a fermata. The second staff continues the melody and includes the letters 'L R' below the notes.

82 Rainbow Scales - Level 3

Musical notation for 'Rainbow Scales' in G major, 4/4 time. The melody is written on two staves, each containing a scale with slurs over the notes.

83 La Cucuracha - Level 1 🌱

Two staves of musical notation for 'La Cucuracha - Level 1'. The first staff begins with a treble clef, a key signature of one flat (B \flat), and a common time signature (C). The melody consists of quarter and eighth notes with rests. The second staff continues the melody, ending with a double bar line.

84 La Cucuracha - Level 2 🌱🌱

Two staves of musical notation for 'La Cucuracha - Level 2'. The first staff begins with a treble clef, a key signature of one sharp (F#), and a common time signature (C). The melody is more complex than Level 1, featuring eighth and sixteenth notes. The second staff continues the melody, ending with a double bar line.

85 Greensleeves - Level 1

Two staves of musical notation for 'Greensleeves - Level 1'. The first staff begins with a treble clef, a key signature of one flat (B \flat), and a 3/4 time signature. The melody features a mix of quarter, eighth, and sixteenth notes. The second staff continues the melody, ending with a double bar line.

86 Greensleeves - Level 2

Two staves of musical notation for 'Greensleeves - Level 2'. The first staff begins with a treble clef, a key signature of one sharp (F#), and a 3/4 time signature. The melody is more complex than Level 1, featuring eighth and sixteenth notes. The second staff continues the melody, ending with a double bar line.

87 Erie Canal - Level 1

Two staves of musical notation for 'Erie Canal - Level 1'. The first staff begins with a treble clef, a key signature of one sharp (F#), and a 4/4 time signature. The melody consists of quarter and eighth notes. The second staff continues the melody, ending with a double bar line.

96 Sea Shanty I



97 Vivaldi - Spring



98 Hallelujah Chorus



99 Arirang



100 Hava Nagila



101 Grand Old Flag



102 Blue Bells of Scotland



103 My Clay Doll

Two staves of musical notation for 'My Clay Doll'. The first staff begins with a treble clef and a key signature of one sharp (F#). The melody consists of quarter and eighth notes, with some beamed eighth notes and a final whole note.

104 Simple Gifts - Level 1

Two staves of musical notation for 'Simple Gifts - Level 1'. The first staff begins with a treble clef and a key signature of one flat (B \flat). The melody is a simple eighth-note scale starting with a quarter rest, followed by eighth notes and a final quarter note.

105 Simple Gifts - Level 2

Two staves of musical notation for 'Simple Gifts - Level 2'. The first staff begins with a treble clef and a key signature of one sharp (F#). The melody is more complex than Level 1, featuring beamed eighth notes and a final quarter note.

106 William Tell Overture

Two staves of musical notation for 'William Tell Overture'. The first staff begins with a treble clef and a key signature of one flat (B \flat). The melody features a mix of eighth and quarter notes, with a final quarter note.

107 Concert F# Scale - Level 3

Two staves of musical notation for 'Concert F# Scale - Level 3'. The first staff begins with a treble clef and a key signature of two sharps (F# and C#). The melody is a scale of eighth notes, starting with a quarter rest and ending with a quarter note.

108 Concert F Thirds - Level 1

Musical notation for Concert F Thirds - Level 1. The piece is in G major (one sharp) and 4/4 time. It consists of a single melodic line with a simple, stepwise contour.

109 Yankee Doodle - Level 4

Musical notation for Yankee Doodle - Level 4. The piece is in B-flat major (two flats) and 4/4 time. It features a more complex melody with eighth-note patterns and slurs.

110 Jingle Bells - Level 4

Musical notation for Jingle Bells - Level 4, first line. The piece is in B-flat major (two flats) and 4/4 time. It features a complex melody with eighth-note patterns and slurs.

Musical notation for Jingle Bells - Level 4, second line. The piece is in B-flat major (two flats) and 4/4 time. It features a complex melody with eighth-note patterns and slurs.

111 Etude #12

Musical notation for Etude #12. The piece is in B-flat major (two flats) and 4/4 time. It features a complex melody with eighth-note patterns and slurs. Below the staff are fingerings: ↓ ↓ ↑ ↑ ↓ ↓ ↑ ↑ ↓ ↓ ↑ ↑ ↓ ↓ ↓ ↓ ↑ ↑ ↓ ↓.

112 Etude #13

Musical notation for Etude #13. The piece is in B-flat major (two flats) and 4/4 time. It features a complex melody with eighth-note patterns and slurs. Below the staff are fingerings: ↓ ↓ ↑ ↑ ↓ ↓ ↑ ↑ ↓ ↓ ↑ ↑ ↓ ↓ ↓ ↓ ↑ ↑ ↓ ↓.

113 Ode to Joy - Level 2

Musical notation for Ode to Joy - Level 2, first line. The piece is in B-flat major (two flats) and 4/4 time. It features a simple melody with eighth-note patterns. Below the staff are fingerings: ↓ ↑ ↓ ↑ ↓ ↓ ↑ ↑.

Musical notation for Ode to Joy - Level 2, second line. The piece is in B-flat major (two flats) and 4/4 time. It features a simple melody with eighth-note patterns.

114 London Bridge - Level 2

Musical notation for London Bridge - Level 2. The piece is in B-flat major (two flats) and 4/4 time. It features a simple melody with eighth-note patterns. Below the staff are fingerings: ↓ ↑ ↓ ↑ ↓ ↑ ↑.

115 Toreador Song

Two staves of musical notation for the Toreador Song. The first staff contains the main melody in B-flat major, featuring eighth and sixteenth notes with slurs. The second staff continues the melody with some chromatic alterations and rests.

116 Rule Britannia

One staff of musical notation for Rule Britannia in G major, featuring a melody of eighth and quarter notes.

117 Haydn Trumpet Concerto

Two staves of musical notation for the Haydn Trumpet Concerto. The first staff shows a melody in B-flat major with slurs. The second staff features a more rhythmic melody with eighth notes and slurs, including fingerings indicated by arrows.

118 Morning Mood

One staff of musical notation for Morning Mood in B-flat major, 3/4 time, featuring a melody of quarter and eighth notes with slurs.

119 Jupiter

Two staves of musical notation for Jupiter in G major, featuring a melody of quarter and eighth notes with slurs.

120 In the Hall of the Mountain King

One staff of musical notation for In the Hall of the Mountain King in B-flat major, 4/4 time, featuring a melody of eighth and quarter notes with slurs.

121 Symphony Fantastique

Musical notation for 'Symphony Fantastique' in B \flat major, 2/4 time. The piece consists of two staves of music. The first staff contains a melody of quarter and eighth notes. The second staff continues the melody with some sixteenth-note passages. Below the second staff are fingerings indicated by up and down arrows.

122 Bolero

Musical notation for 'Bolero' in 3/4 time. The piece consists of two staves of music. The first staff features a melody with many slurs and ties. The second staff continues the melody. Below the second staff are fingerings indicated by up and down arrows.

123 William Tell Overture - Level 2

Musical notation for 'William Tell Overture - Level 2' in G major, 4/4 time. The piece consists of two staves of music. The first staff begins with a whole rest followed by a melody of eighth and quarter notes. The second staff continues the melody with some slurs. Below the second staff are fingerings indicated by up and down arrows.

124 Etude #14

Musical notation for 'Etude #14' in B \flat major, 2/4 time. The piece consists of one staff of music featuring a melody with several triplet markings (indicated by a '3' above the notes). Below the staff are fingerings indicated by up and down arrows.

125 Etude #15

Musical notation for 'Etude #15' in G major, 2/4 time. The piece consists of one staff of music featuring a melody with several triplet markings (indicated by a '3' above the notes). Below the staff are fingerings indicated by up and down arrows.

126 Etude #16

Musical notation for 'Etude #16' in G major, 2/4 time. The piece consists of one staff of music featuring a melody with several triplet markings (indicated by a '3' above the notes). Below the staff are fingerings indicated by up and down arrows.

127 Etude #17

Musical notation for Etude #17, featuring a treble clef and a key signature of one flat. The piece consists of a single melodic line with three triplet markings. Below the staff, there are fingerings indicated by up and down arrows.

128 Wild Blue Yonder

Musical notation for Wild Blue Yonder, featuring a treble clef and a key signature of one flat. The piece consists of a single melodic line with one triplet marking.

129 Concert F Arpeggios

Musical notation for Concert F Arpeggios, featuring a treble clef and a key signature of one sharp. The piece consists of a single melodic line with multiple triplet markings.

130 Habanera

Musical notation for Habanera, featuring a treble clef and a key signature of one sharp. The piece consists of two staves of musical notation with various rhythmic patterns and fingerings indicated by up and down arrows.

131 Etude #18

Musical notation for Etude #18, featuring a treble clef and a 3/8 time signature. The piece consists of a single melodic line with numerous down-bow or breath marks indicated by down arrows.

132 Etude #19

Musical notation for Etude #19, featuring a treble clef. The piece consists of two staves of musical notation with numerous down-bow or breath marks indicated by down arrows.

138 Jarabe Tapatío

Two staves of musical notation for the piece 'Jarabe Tapatío'. The first staff begins with a treble clef, a key signature of one flat (B \flat), and a common time signature (C). The melody consists of eighth and quarter notes with various accidentals, including a sharp sign (#) and a flat sign (b). The second staff continues the melody with similar rhythmic patterns and concludes with a double bar line.

139 Epitaph of Seikilos

Two staves of musical notation for the piece 'Epitaph of Seikilos'. The first staff begins with a treble clef, a key signature of one flat (B \flat), and a common time signature (C). The melody is composed of quarter and eighth notes. The second staff continues the melody and ends with a double bar line.

140 When Johnny Comes Marching Home Again

Four staves of musical notation for the piece 'When Johnny Comes Marching Home Again'. The first staff begins with a treble clef, a key signature of one flat (B \flat), and a common time signature (C). The melody features a mix of quarter, eighth, and dotted notes. The subsequent staves continue the melody, with the final staff ending with a double bar line.

141 Etude #21

Musical notation for Etude #21, featuring a treble clef, a 4/4 time signature, and a series of eighth and sixteenth notes with corresponding fingerings indicated by up and down arrows.

142 Etude #22

Musical notation for Etude #22, featuring a treble clef and a series of eighth and sixteenth notes with corresponding fingerings indicated by up and down arrows.

143 Sea Shanty 2

Musical notation for Sea Shanty 2, featuring a treble clef, a key signature of one flat, and a series of eighth and sixteenth notes.

144 Alabama Gal - Level 1

Musical notation for Alabama Gal - Level 1, featuring a treble clef and a series of eighth and sixteenth notes.

Musical notation for Alabama Gal - Level 1 (continued), featuring a treble clef and a series of eighth and sixteenth notes.

145 Alabama Gal - Level 2

Musical notation for Alabama Gal - Level 2, featuring a treble clef and a series of eighth and sixteenth notes.

Musical notation for Alabama Gal - Level 2 (continued), featuring a treble clef and a series of eighth and sixteenth notes.

146 The Entertainer - Level 1

Musical notation for The Entertainer - Level 1, featuring a treble clef, a key signature of one sharp, and a series of eighth and sixteenth notes with corresponding fingerings indicated by up and down arrows.

147 The Entertainer - Level 2

Musical notation for The Entertainer - Level 2, featuring a treble clef, a key signature of one sharp, and a series of eighth and sixteenth notes with corresponding fingerings indicated by up and down arrows.